

Hoesch Matrix
System individuell

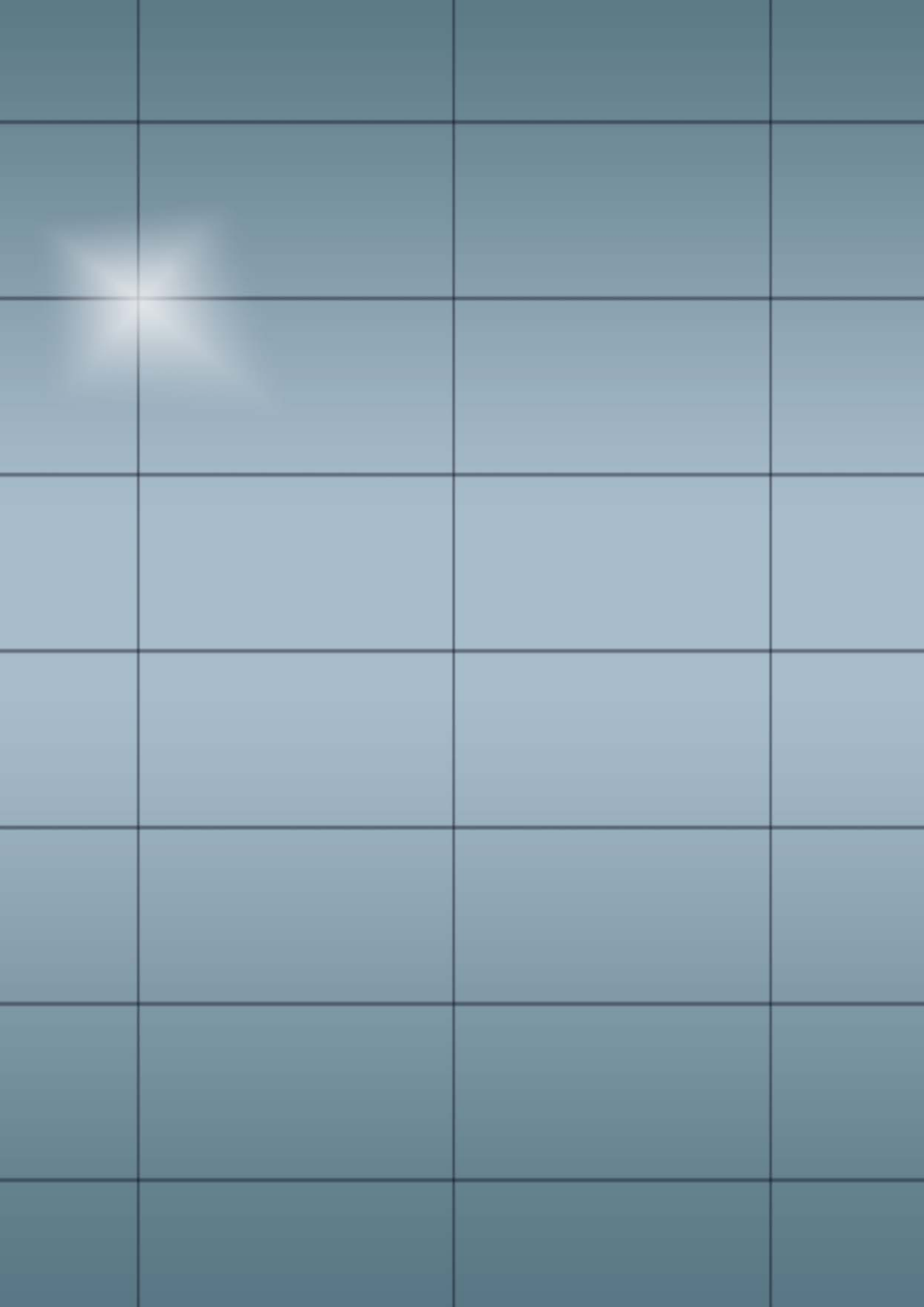


A company
of ThyssenKrupp
Steel

ThyssenKrupp Bausysteme



ThyssenKrupp





Hoesch Matrix® is the latest addition to the sandwich panel family developed by ThyssenKrupp Bausysteme. This advanced façade element complete with thermal insulation is a real eye catcher with its flat surface finish and the clean-cut, square-edged design. Its visual appearance is most striking and it is a product specially created for demanding and modern industrial architecture. The dimensions of the panels give buildings a distinctive and stylish look. Individual, distinguished and elegant - an abundance of possible designs provides wide range of opportunities for achieving outstanding architecture. The Hoesch Matrix® façade system is both reliable and trend-setting.

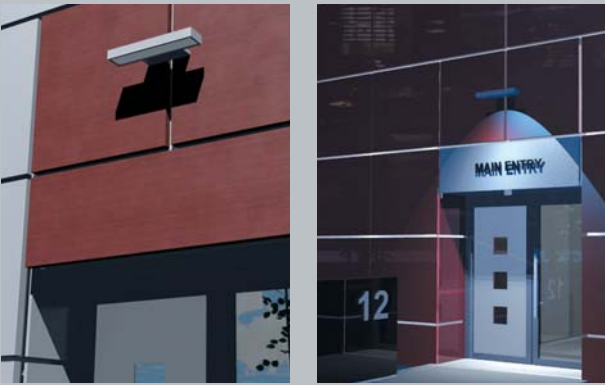




Vision and planning.



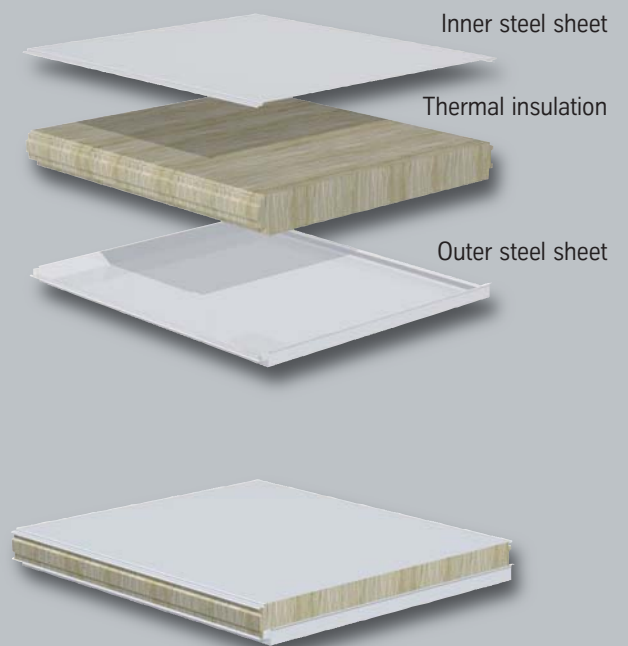
The Hoesch Matrix® façade system combines top-quality materials and innovative production methods to create an extremely effective holistic solution. The modular Hoesch Matrix® system permits an easier translation of design ideas and allows them to be put into practice more rapidly. Planners are offered a high-grade envelope for the projected building that meets exacting demands. The high degree of standardisation saves time, and, of course, time is money. Reliable cost evaluation at all phases of the project, from the first ideas to final completion, is ensured by our qualified experts who will work with you to bring your ideas to fruition.





For all panel thicknesses of Hoesch Matrix®, window systems as recommended by ThyssenKrupp Bausysteme can be integrated into the façade so as to form a homogeneous surface. The continuity of the Hoesch Matrix® joint line is maintained even if the windows extend over several panel widths.

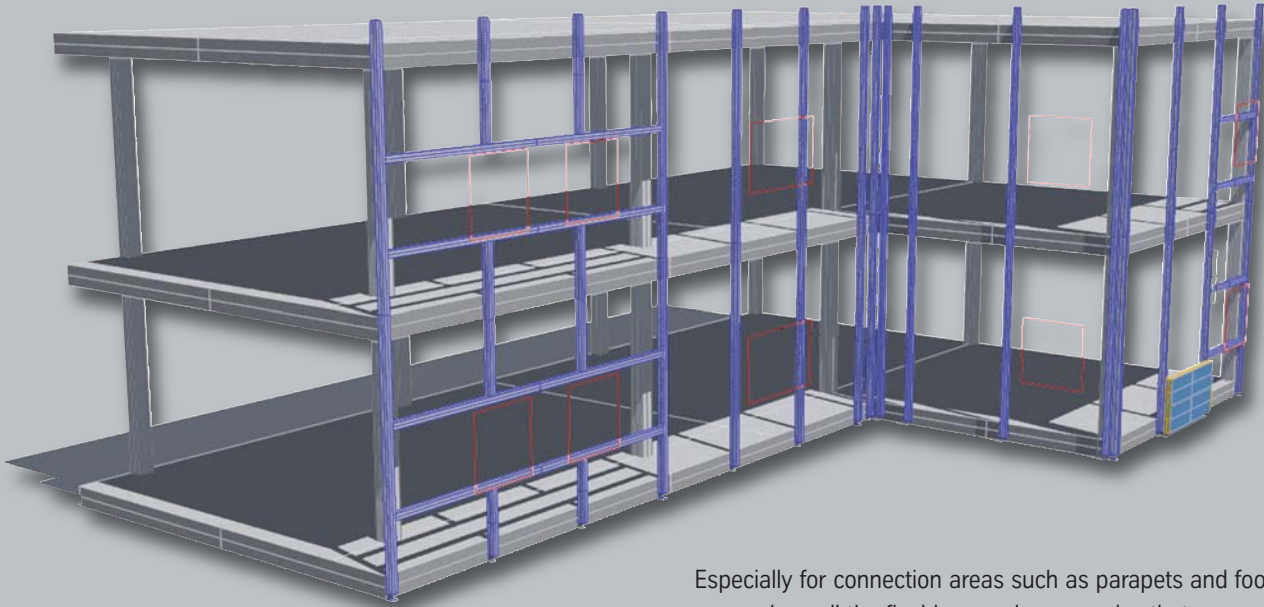
Hoesch Matrix® sandwich elements consist of an outer sheet of high-quality steel with a coloured coating, a mineral wool insulation core and an inner steel sheet, also provided with coloured coating. Hoesch Matrix® elements are produced with tongue and grooved joints in a modern production plant.





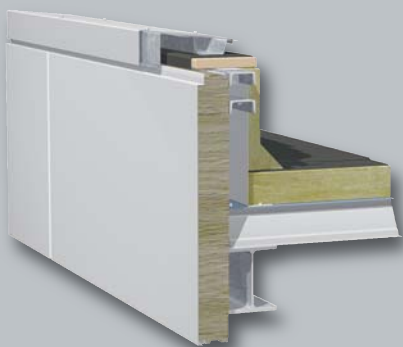
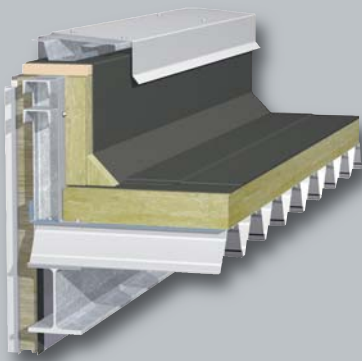
Design from a single supplier.

In Hoesch Matrix®, we offer the optimum solution for a perfect façade system, from initial planning right through to execution.



Especially for connection areas such as parapets and foot points we produce all the flashings and accessories that are required. On the basis of our extensive knowhow, we follow high standards down to the least detail, which ensures that the buildings have a long service life.

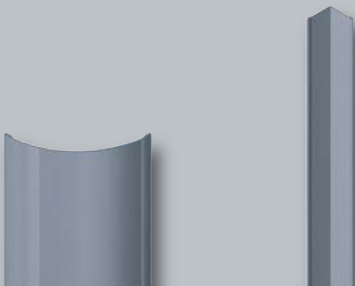
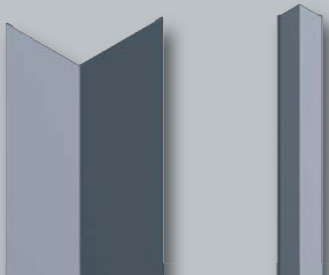
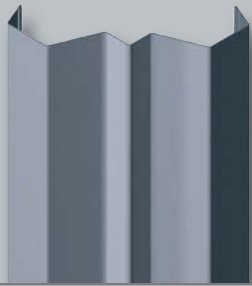
Parapet details



Base details



There are no limits to creative versatility. Many alternative methods of use as well as combinations with other products from our large range are possible. Please contact us for information on the different ways of combining the Hoesch Matrix® system with other products in our range.





Cross joint details



Designation of building element	Element thickness d mm	Material thickness		Max. length supplied m	Weight kg/m ²	DIN EN ISO 6946		DIN EN 13162 and EN 14509 with joint influence	
		outer sheet t _N mm	inner sheet t _N mm			Thermal resistance R* m ² K/W	Heat transfer coefficient U* W/m ² K	Thermal resistance R* m ² K/W	Heat transfer coefficient U* W/m ² K
Hoesch Matrix®	80	0.75 0.75	0.50 0.75	1-6	20.4 22.6	1.76	0.52	1.75	0.54
	100			1-6	22.9 25.1	2.20	0.42	2.20	0.44
	120			1-6	25.4 27.6	2.64	0.36	2.60	0.37
	140			1-6	27.9 30.1	3.09	0.31	3.05	0.32
	150			1-6	29.2 31.3	3.31	0.29	3.30	0.30
	160			1-6	30.4 32.6	3.53	0.27	3.50	0.28
	*180			1-6	28.5 30.7	4.16	0.23	4.15	0.24
	*200			1-6	30.5 32.7	4.63	0.21	4.60	0.22

* on request

The ideal solution for corners. The Hoesch Matrix® façade system offers architects and planners two elegant alternatives for the corner areas of a building. For continuous joints around the corner, we recommend solution no. 2, and when the joint is to end before the corner, solution no. 1 is recommended.

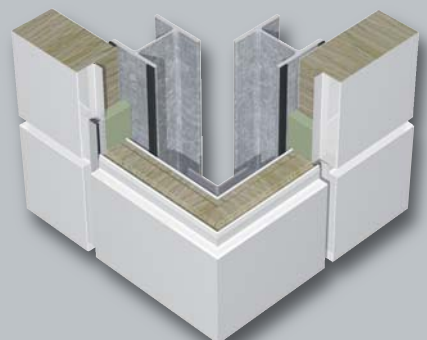
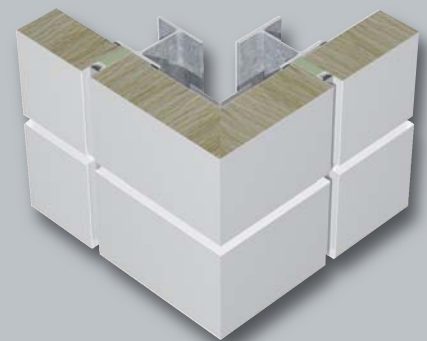
Corner design without continuous joint

1



Corner design with continuous joint

2



Hoesch Matrix® System Data

Joint width	25 mm horizontal/vertical
Standard widths	500 - 1,000 mm cover width
Non standard widths	350 - 500 mm - upon request (flashings)
Materials	Steel S320GD ZA255, GALFAN®, other metals upon request
Surface texture	Outside: flat (E) Inside: slightly profiled (L), flat (E) upon request
Coating	Outside: 25 µ PLADUR® polyvinylidene fluoride (PVDF) or PLADUR® polyester (SP) Inside: 15 µ PLADUR® DU 9002 or DU 9010. All RAL or NCS colours, no minimum order quantities ReflectionsOne®, ReflectionsLume, ReflectionsCinc also possible
Class of building material	As per EN 13501-1, non combustible A2, s1-d0
Class of fire resistance	As per EN 1365 EI30 for panel thicknesses ≥80 mm EI90 for panel thicknesses ≥120 mm
Sound reduction	R _w = 28 - 32 dB, depending on the panel thickness
Tightness against driving rain	As per EN 86, 0.6 Pa, no penetration of water
Air tightness	0.6 kPa = 1.7 m³/h



The benefits.

Impressive quality from the basic material right through to the completed building. In addition to far-reaching possibilities for design, the Hoesch Matrix® façade system excels through its high standard of workmanship and outstanding materials in combination with innovative production methods to suit the most exacting demands.



Product benefits at a glance:

- we offer advice, planning and design from a single source
- the core of mineral wool corresponds to building material class A1 and is incombustible. It is connected to the cover sheets so as to be shear resistant
- concealed fastening
- flat surface
- the appearance is that of a personalised curtain façade
- flashings are individually adapted to the building
- the high-quality thermally insulated façade system is available with various thicknesses of element
- basic modules are available in lengths between 1.0 m and 6.0 m
- the façade system is exclusively designed for single-span girders
- we maintain co-operation with fitting and installation companies for many years
- planning and tendering documents have been developed to suit the specific project
- various colours are available on request
- available with matching windows

The right partner.

The right partner is one of the key criteria for acting and reacting professionally and flexibly.

Quality is not confined to the product. Those who have experience of working with the Hoesch Matrix® façade system know it to be an effective, high-standard product. Is there any technology that works in practice without the right partners giving an efficient service? This is why we offer continuous training to our contractors to qualify them as certified partners.



Please contact our Hoesch Matrix® specialists:

Thorsten Leissner
Zeppelinstraße 44
D-73760 Ostfildern (Kemnat)

Phone: + 49 7 11 / 1 67 68 22, Mobil: 01 70 / 7 61 54 27
Fax: + 49 7 11 / 1 67 68 26
E-Mail: thorsten.leissner@thyssenkrupp.com

Stefan Schrage
Hammerstraße 11
D-57223 Kreuztal

Phone: + 49 27 32 / 599 1 464, Mobil: 01 71 / 2 30 15 48
Fax: + 49 27 32 / 599 1 501
E-Mail: stefan.schrage@thyssenkrupp.com

Chris Redmond B.Eng. (Hons)
Export
Hammerstraße 11
D-57223 Kreuztal

Phone: + 49 27 32 / 599 1 348, Mobil: 01 77 / 4 95 89 02
Fax: + 49 27 32 / 599 1 430
E-Mail: chris.redmond@thyssenkrupp.com

ThyssenKrupp Bausysteme GmbH

Hammerstrasse 11

D-57223 Kreuztal, Germany

Phone: +49 / 27 32 / 599 1 221

Fax: +49 / 27 32 / 599 1 219

E-Mail: export.tks-bau@thyssenkrupp.com

Internet: www.hoesch-matrix.com, www.tks-bau.com